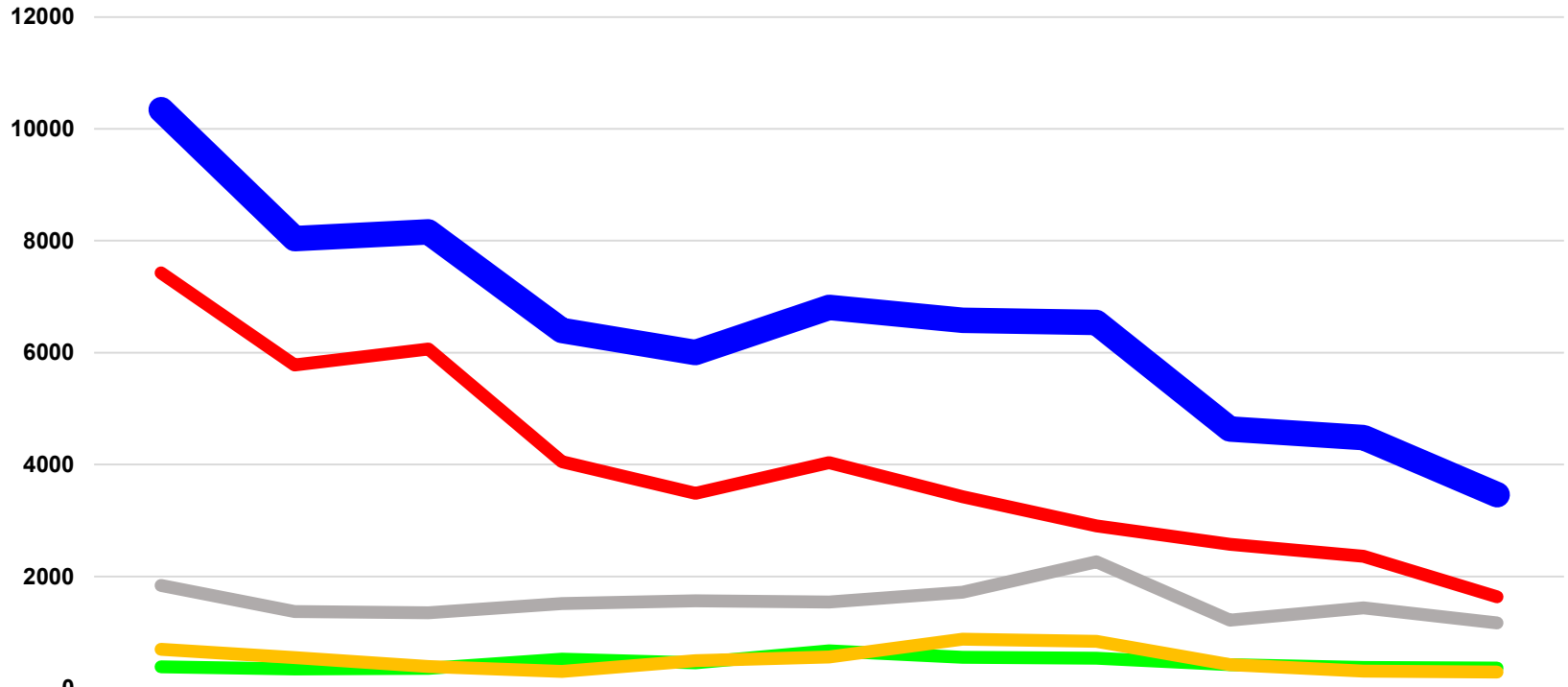


MINE HEALTH AND SAFETY PERFORMANCE OVERVIEW

24 January 2020

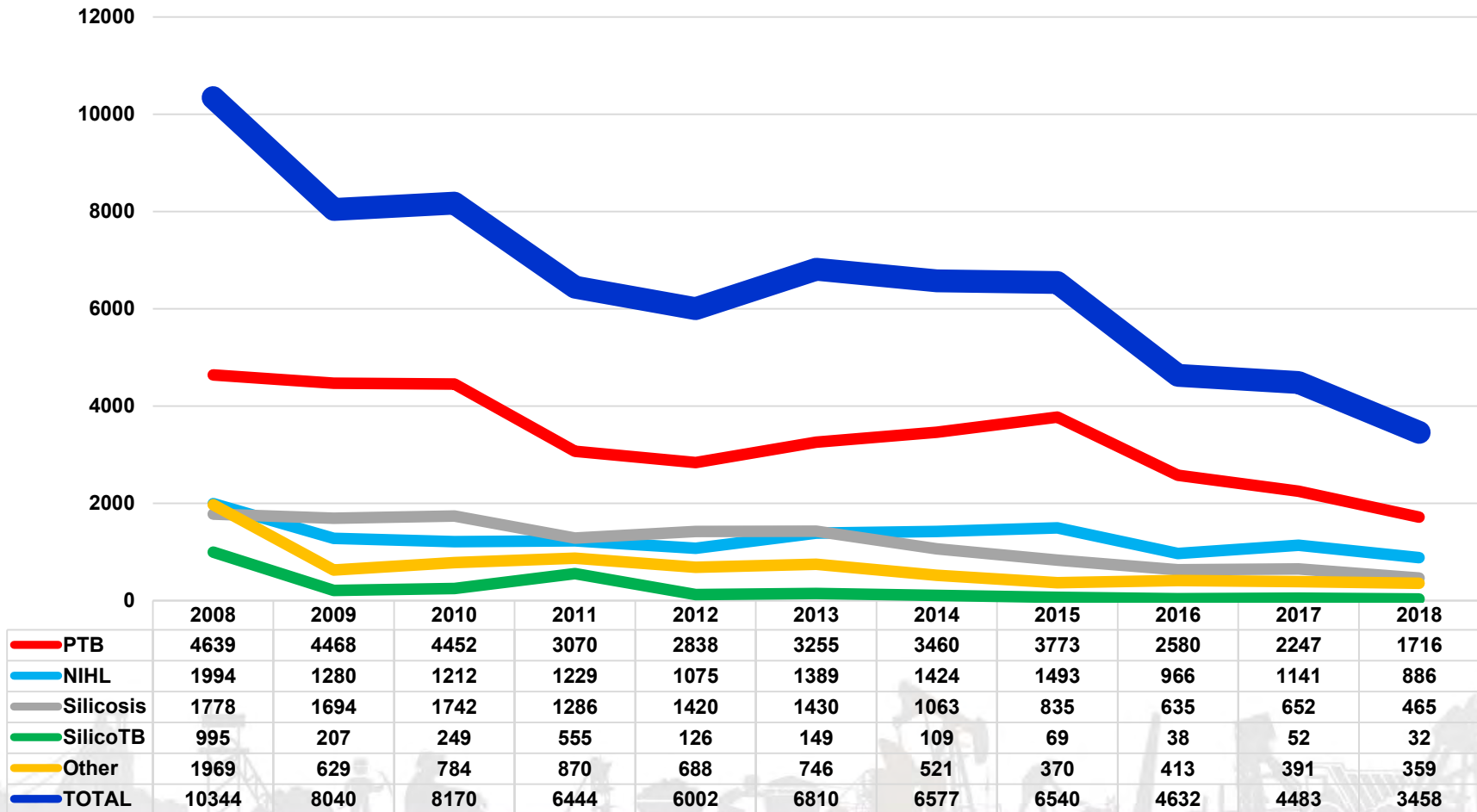


TOTAL OCCUPATIONAL DISEASES BY COMMODITY

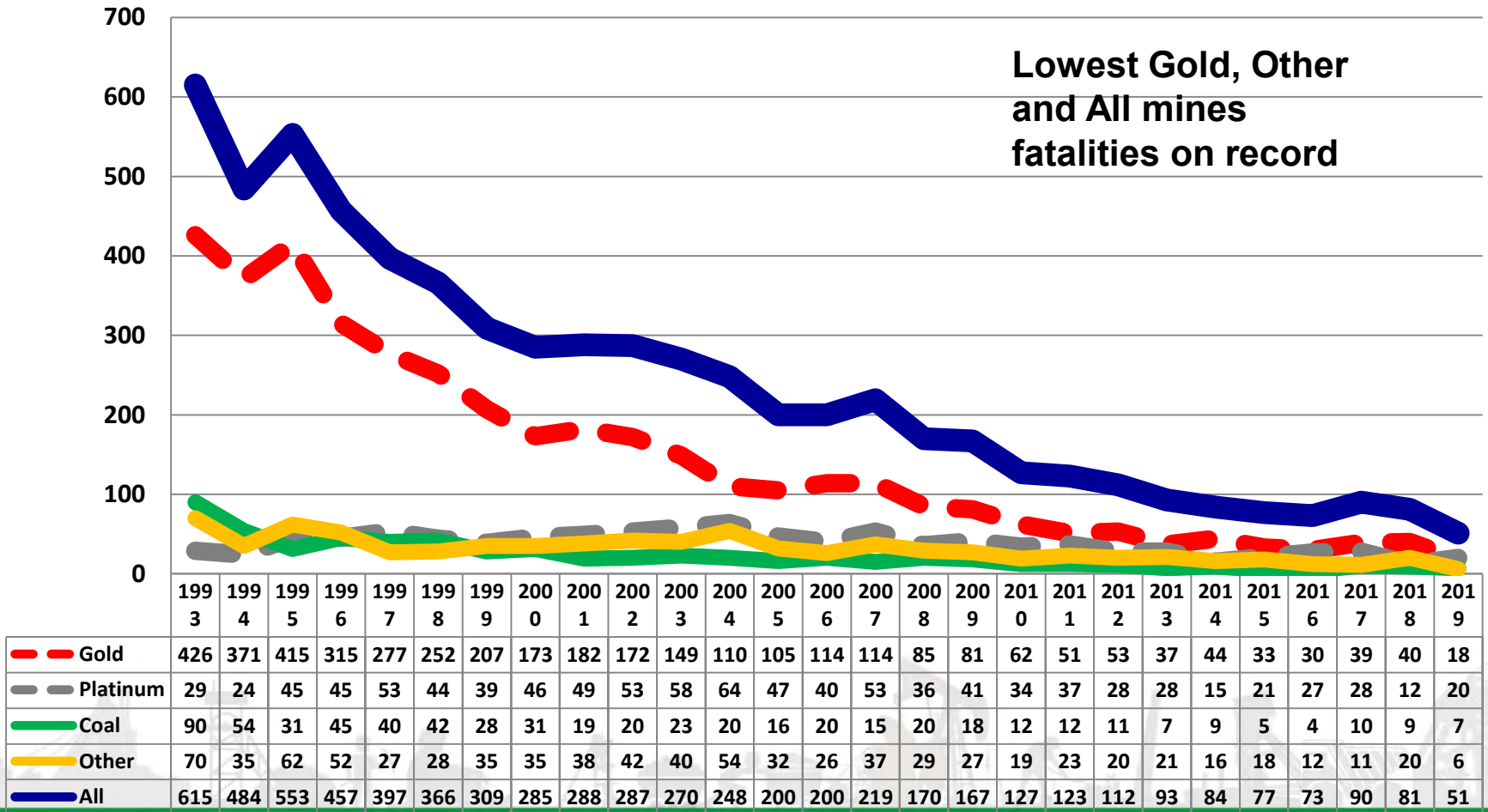


	2008	2009	2010	2011	2012	2013	2014	2015	2016	2017	2018
Gold	7426	5777	6063	4052	3486	4035	3425	2903	2572	2360	1637
Platinum	1837	1371	1350	1517	1565	1544	1717	2263	1218	1440	1169
Coal	386	344	356	521	456	671	556	535	420	375	360
Other	695	548	391	304	496	560	879	838	422	308	292
All Mines	10344	8040	8160	6394	6003	6810	6577	6540	4632	4483	3458

MAIN OCCUPATIONAL DISEASES REPORTED



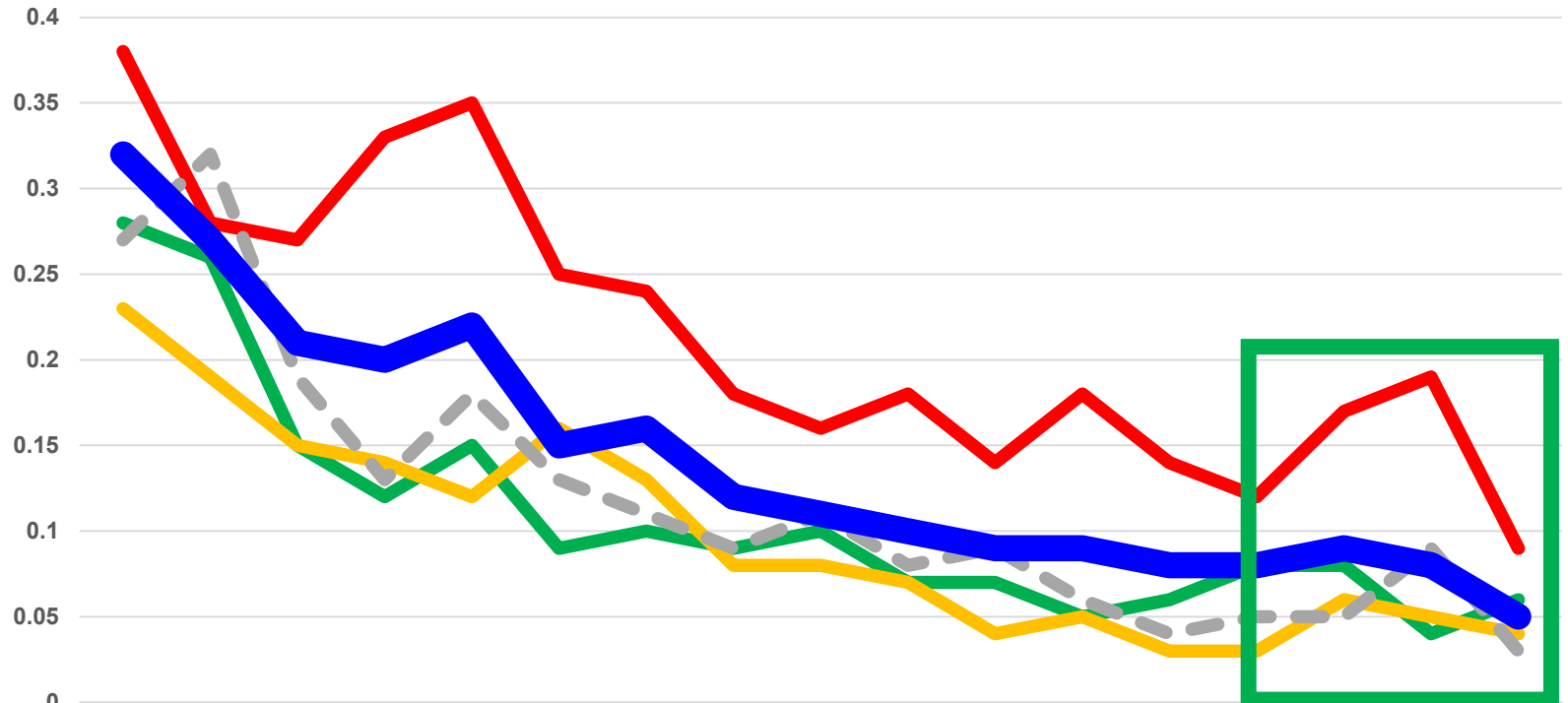
FATALITIES BY COMMODITY



FATALITIES BY COMMODITY

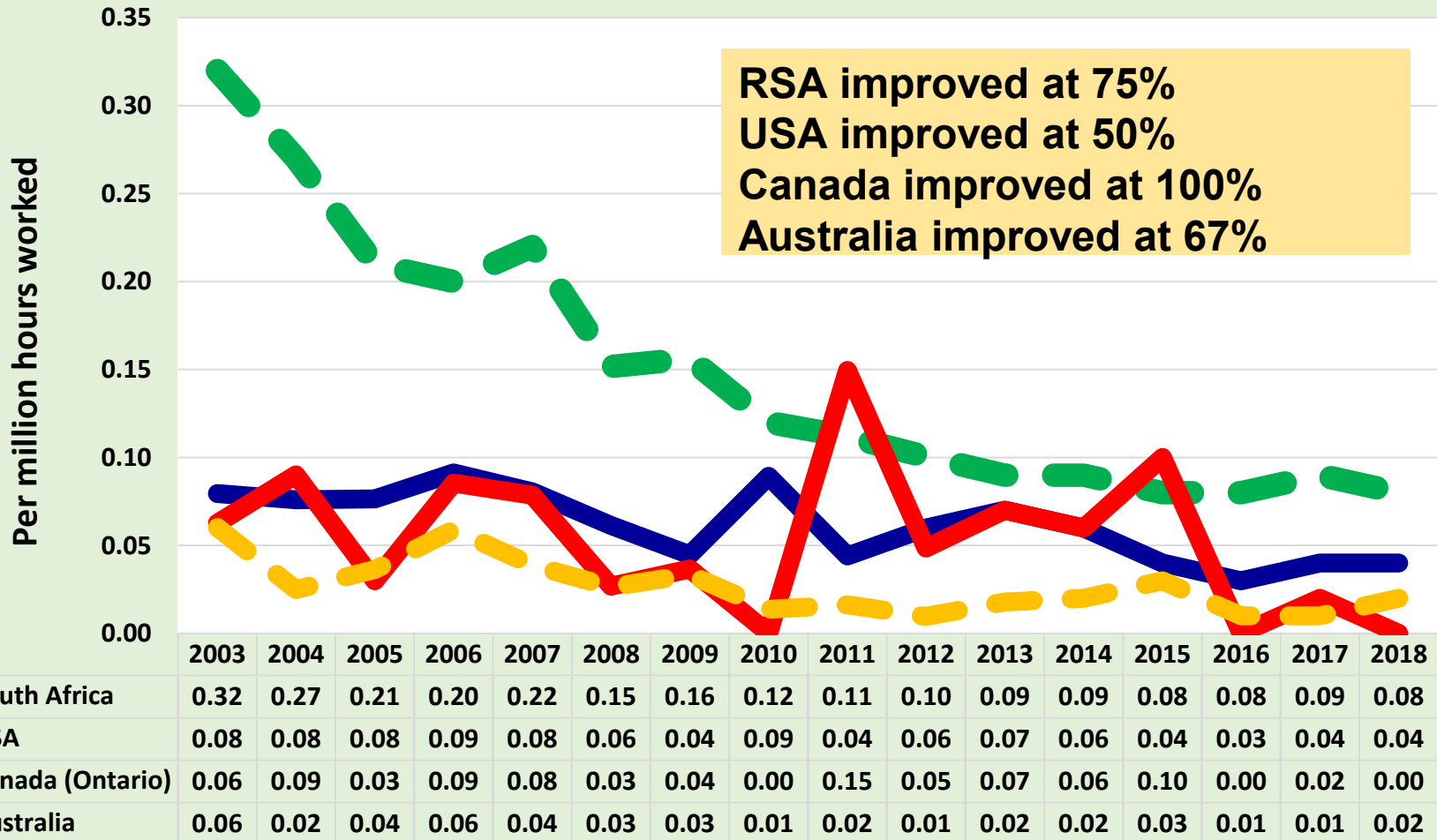
Commodity	1 January – 31 December 2018	1 January – 31 December 2019*	% Change in actual Fatalities
Gold	40	18	-55
Platinum	12	20	67
Coal	9	7	-22
Other	20	6	-70
Total	81	51	-37

PROVISIONAL FATALITY FREQUENCY RATES BY COMMODITY



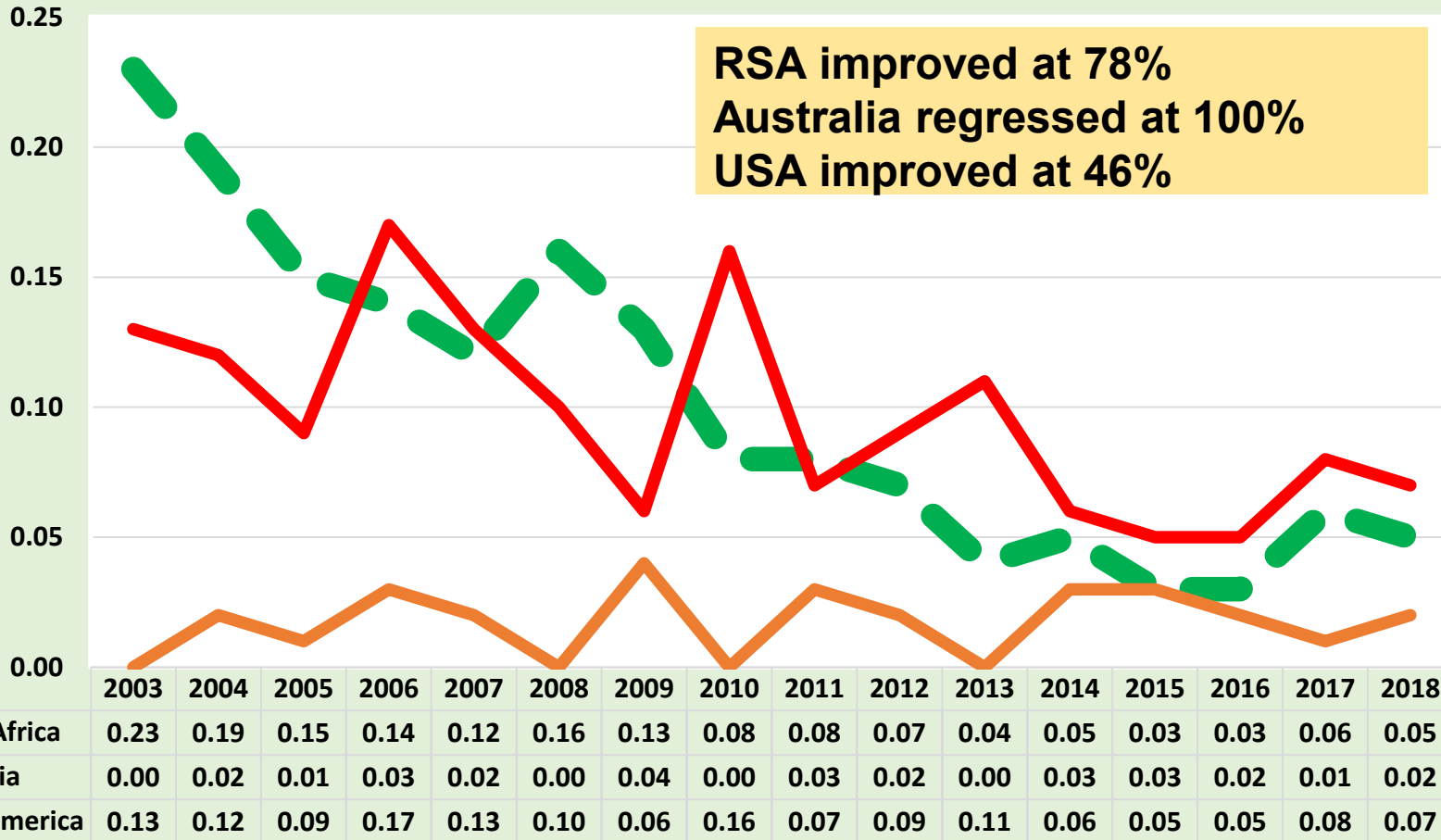
	2003	2004	2005	2006	2007	2008	2009	2010	2011	2012	2013	2014	2015	2016	2017	2018	2019
Gold	0.38	0.28	0.27	0.33	0.35	0.25	0.24	0.18	0.16	0.18	0.14	0.18	0.14	0.12	0.17	0.19	0.09
Platinum	0.28	0.26	0.15	0.12	0.15	0.09	0.10	0.09	0.10	0.07	0.07	0.05	0.06	0.08	0.08	0.04	0.06
Coal	0.23	0.19	0.15	0.14	0.12	0.16	0.13	0.08	0.08	0.07	0.04	0.05	0.03	0.03	0.06	0.05	0.04
Other	0.27	0.32	0.19	0.13	0.18	0.13	0.11	0.09	0.11	0.08	0.09	0.06	0.04	0.05	0.05	0.09	0.03
All	0.32	0.27	0.21	0.2	0.22	0.15	0.16	0.12	0.11	0.1	0.09	0.09	0.08	0.08	0.09	0.08	0.05

International Comparison of Fatality Rates



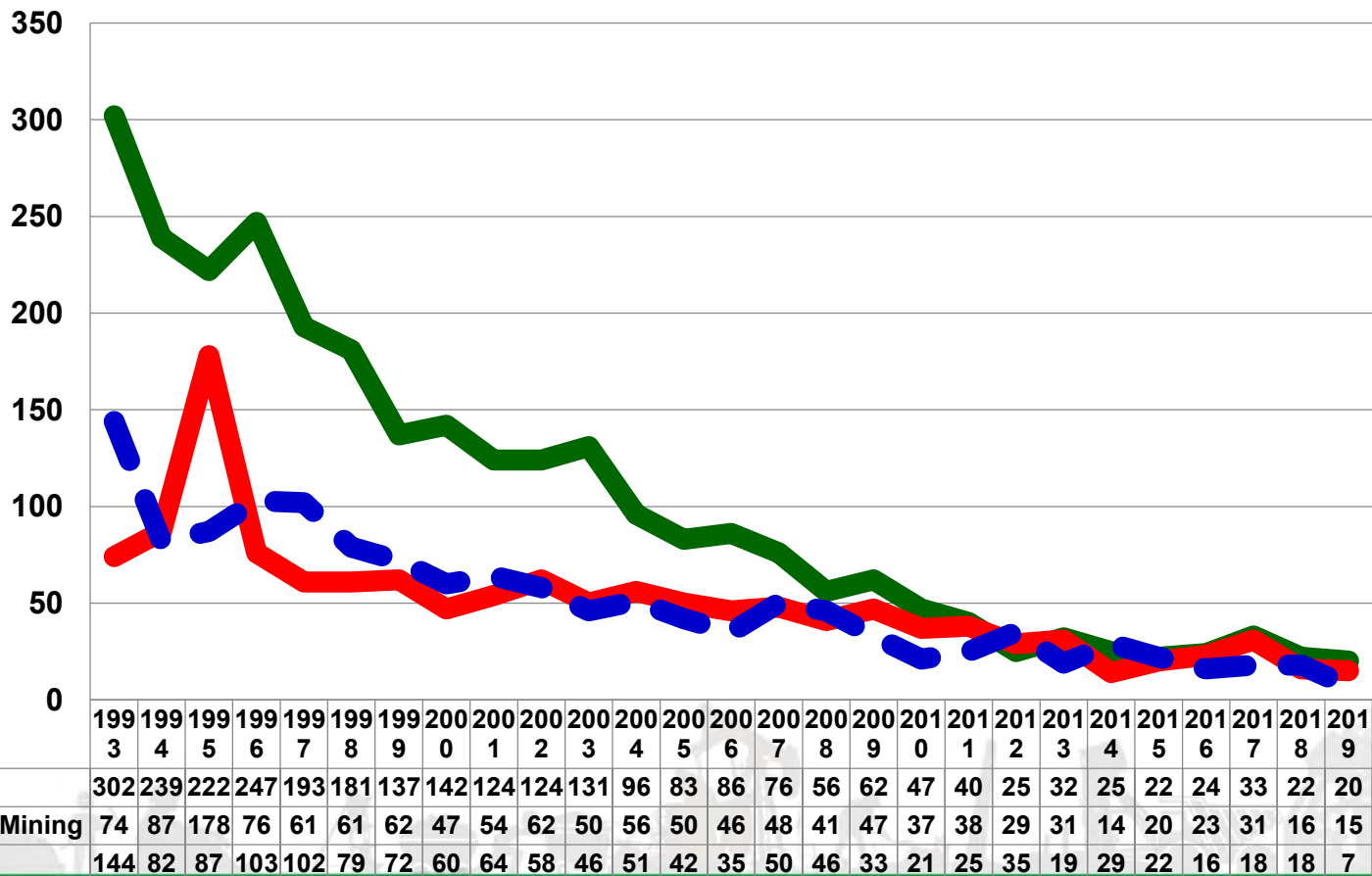
International Comparison of Coal Fatality Rates

Per Million Hours Worked

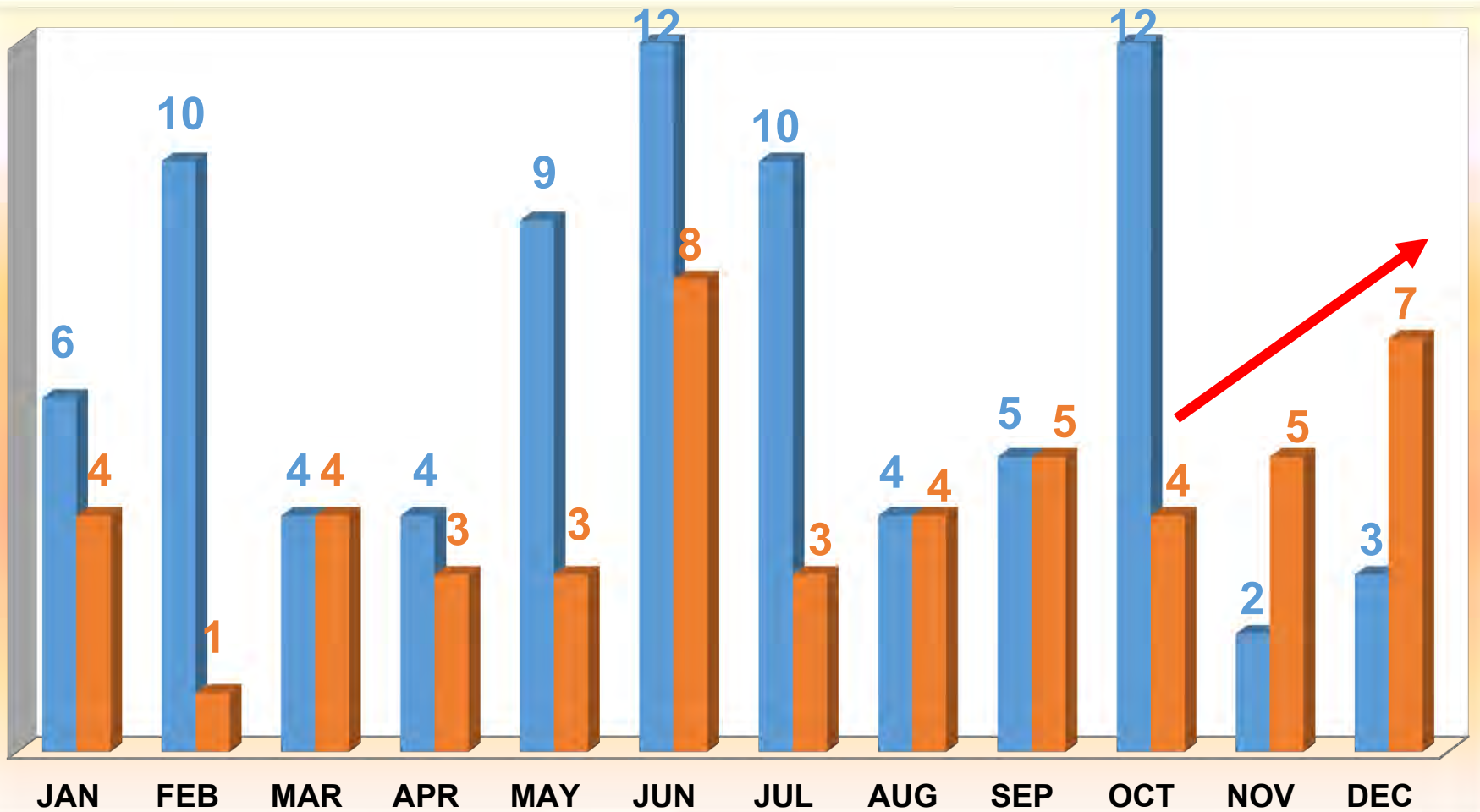


RSA improved at 78%
Australia regressed at 100%
USA improved at 46%

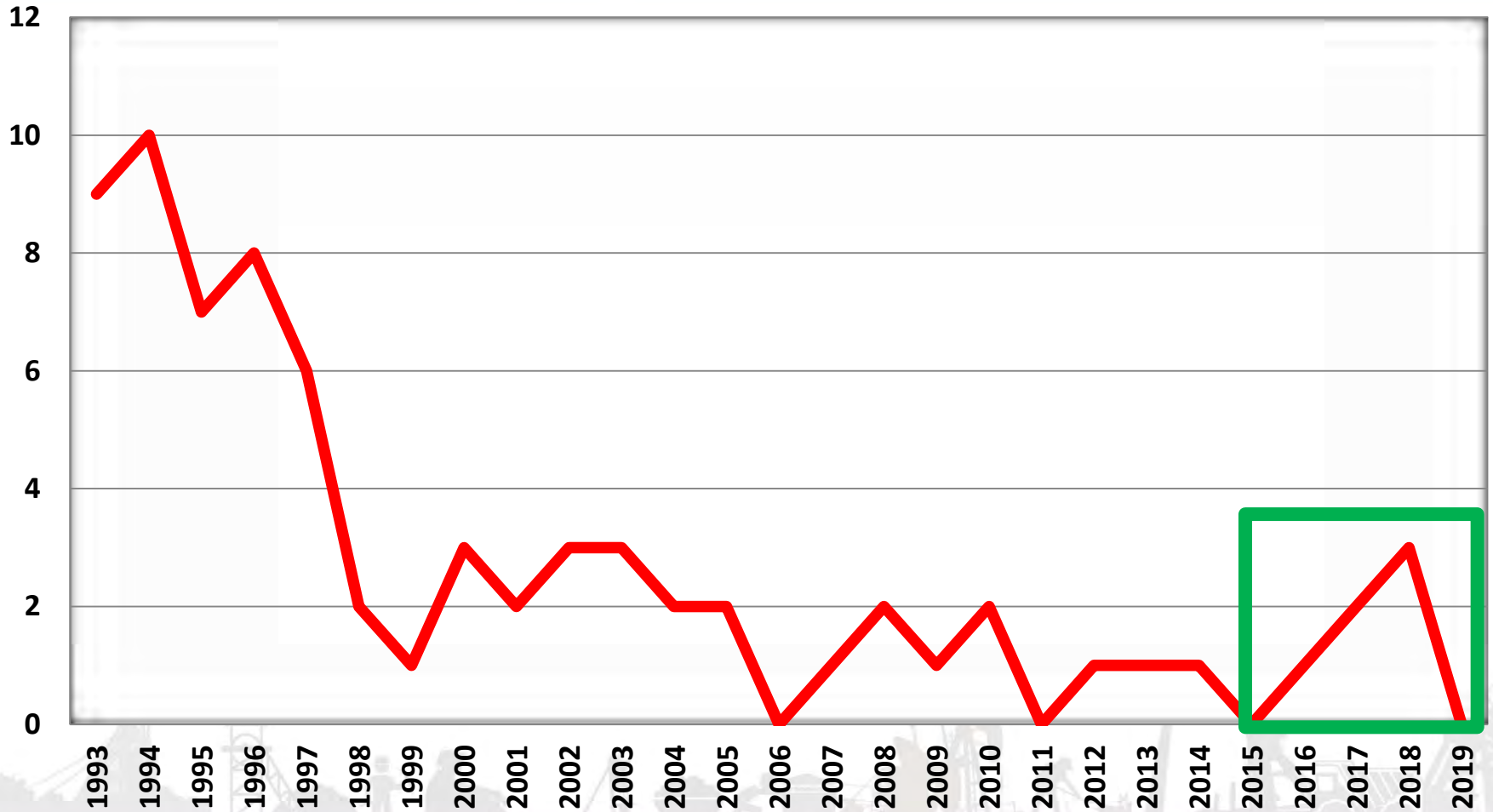
MAJOR CONTRIBUTORS OF FATALITIES



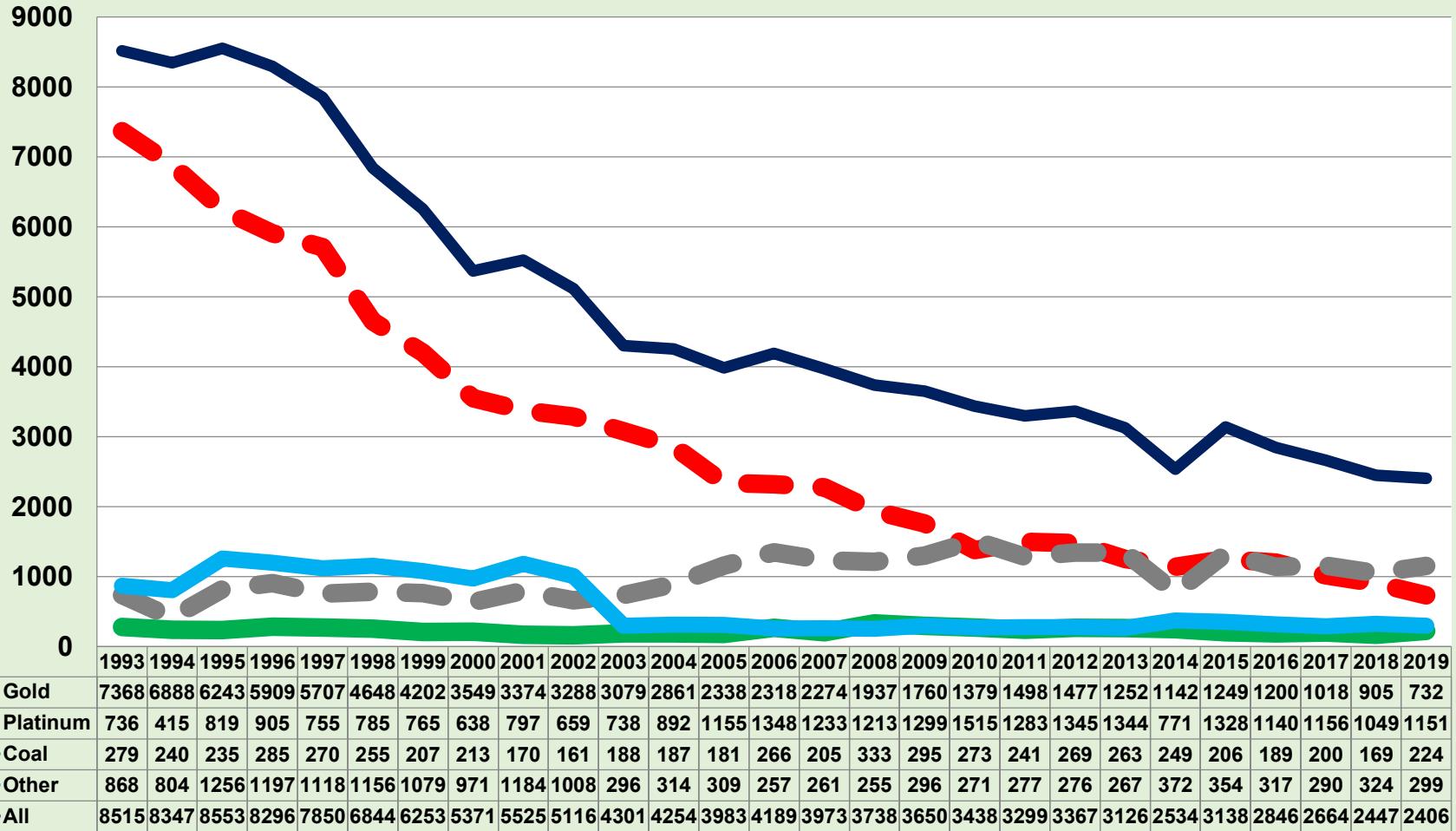
FATALITIES PER MONTH 2018 AND 2019



MINE DISASTERS REPORTED BY SECTOR



INJURIES BY COMMODITY



CONCLUSION

- Although there has been a significant improvement, we should continue with partnerships that will lead to achieving the goal of zero harm on the mineworkers.
- The Department will continue collaborating and supporting the initiatives of its social partners to ensure that there is sustainable improvement.



THANK YOU.



mineral resources

Department:
Mineral Resources
REPUBLIC OF SOUTH AFRICA

